

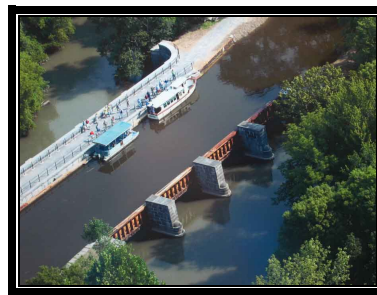


## *Clinton's Ditch: the Erie Canal in Western New York*

### *Landmarks of American History and Culture Workshop Series*

In collaboration with the National Endowment for the Humanities, Niagara County Community College in Sanborn, NY will be hosting an academically intensive, one-week workshop for K-12 teachers entitled "Clinton's Ditch: the Erie Canal in Western New York." Summer scholars can choose from two sessions: July 21-28 or August 4-11. Led by expert university and museum scholars on the Erie Canal, the workshop will use an interdisciplinary approach to explore the following themes:

- the historical context in which the Erie Canal was conceived and the political debates surrounding the project
- the construction and engineering challenges of building the Canal
- the social and cultural impact of the Canal on the residents of upstate New York and the nation as a whole
- the economic impact of the Canal (with particular emphasis on Buffalo)
- how to best integrate the Erie Canal into the elementary or secondary classroom



Summer scholars can expect to supplement classroom learning with tours of the following historic sites:

- the original "Flight of Five" locks in Lockport, NY and a canal cruise through Locks 34 and 35
- the Erie Canal Museum in Syracuse, NY – located in an original Canal weighlock building
- Camillus Erie Canal Park – home to the recently restored Nine-Mile Creek Aqueduct
- Buffalo's Erie Canal harbor and various downtown sites highlighting the city's world-renowned architecture
- Niagara Falls, NY – visualize the engineering challenge of the Niagara Escarpment

**Visit [www.eriecanalwny.org](http://www.eriecanalwny.org) for more details and application instructions**

### **Application Deadline: March 4, 2013**

*Any full or part-time educator with an interest in the Erie Canal is encouraged to apply. Upon completion of the workshop, summer scholars will receive 40 hours of professional development credit and a \$1,200 stipend to cover their expenses.*

**Contact:**

Pierson Bell, Project Director

**E-mail:**

[eriecanalwny@gmail.com](mailto:eriecanalwny@gmail.com)

**Phone:**

716-361-7577

**Website:**

[www.eriecanalwny.org](http://www.eriecanalwny.org)



*NEH Landmarks of American History and Culture programs will give participants direct experiences in the interpretation of significant historical and cultural sites and the use of archival and other primary evidence. Landmarks Workshops present the best scholarship on a specific landmark or related cluster of landmarks, enabling participants to gain a sense of the importance of historical places, to make connections between what they learn in the Workshop and what they teach, and to develop enhanced teaching or research materials.*